

# ST-1120W



## 01/ Versatility in a Small package

Our compact POS solution can instantly transform to a customer display with a flip of the screen providing convenience and valuable space.



## 02/ Smart Terminal Smart Choice

Easy to make a payment thru QR Code, or with build-in Camera to scan.



## 03/ Smart POS for Small Shops

Quickly get your small business up and running with our compact All-in-one POS Solution.



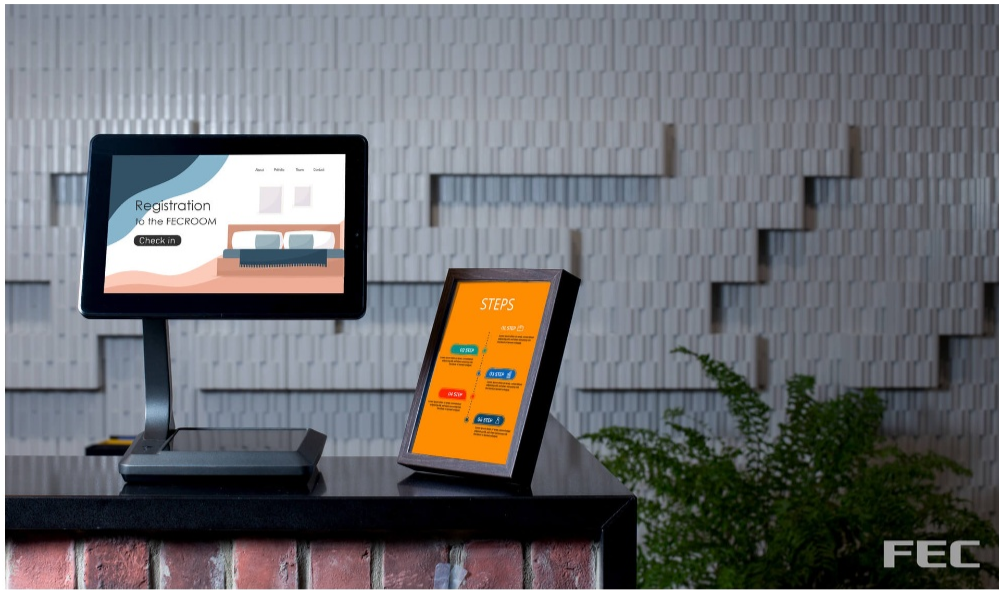
## 04/ Smart Queue Management

Organize and facilitate store lines to keep your business flowing.



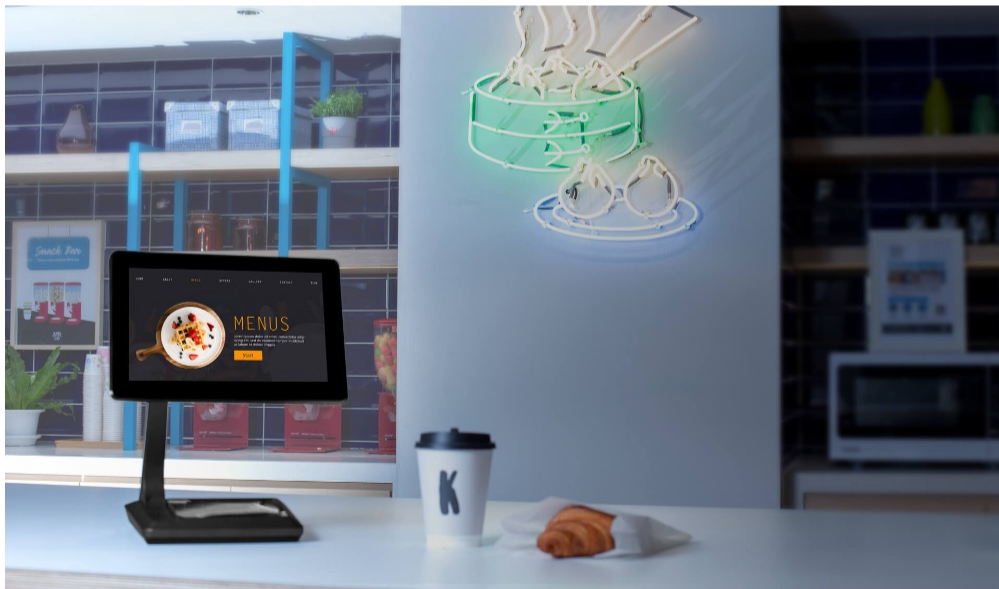
## 05/ Information Collection

Expand Your Loyal Customer Base with ST-1120W.

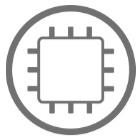


## 06/ Think, Play, and Save

Having fun with Smart Terminal, and save time in line for taking orders.

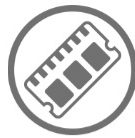


# Specifications



## CPU

- RK-3288 Quad-core Cortex-A17 up to 1.6GHz



## Memory

- 2GB DDR3 On Board



## Storage

- 16GB Built-in eMMC



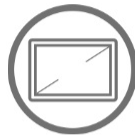
## Connection

- WIFI 802.11 ac & BT 4.2 or LTE 4G (Optional)



## Speaker

- 2 x 2W Internal Speaker



## Display

- 10.1" IPS , 1280 x 800



## Touch

- True-Flat PCAP



## Brightness

- 350 nits



## MTBF

- 25K Hours



## Camera

- 2MP Camera (Front or Rear Optional)



## Power

- 20V / 90W or 20V / 130W External Adapter



## OS

- Android 8.1 Oreo



## Certification

- FCC / CE Class B



## Appearance

- Aluminum Die-casting + Plastic
- Galaxy Gray



## Temperature

- Operation: 0°C ~ 40°C (32°F ~ 104°F)
- Storage: -20°C ~ 60°C (-4°F ~ 140°F)



## Dimensions (W x H x D)

- Product: 263.5 x 315 x 180 mm
- Carton: 330 x 268 x 372 mm



## Weight

- Net: 3.8 Kg
- Gross: 4.7 Kg



## Port

- 2 x RJ45 (COM1 & COM2) RS232
- 3 x USB 2.0 Type A , 1 x USB 3.0 Type A (OTG)
- 1 x RJ11 Cash Drawer (12V or 24V)
- 1 x RJ45 GigaLAN
- 1 x Video Port
- 1 x 20V DC Input
- 1 x 24V DC Output (Optional)
- 1 x SD/TF Card Slot (Max: 64GB)
- 1 x Recovery Button



## Optional

- Customer Display (XP-2025)
- 80mm Thermal Printer (TP-100)